

## **Historic, Archive Document**

Do not assume content reflects current scientific knowledge, policies, or practices.



62.73

1930

MAR 24 1930  
Library of Agriculture

# The Logan Nurseries



## *Rock Plants & Perennials*

---

Bethlehem Pike  
Bus Stop 33

MARY F. WRIGHT  
AMBLER, PA.

Bell Phone,  
Ambler 218

---

---

---

## READ BEFORE ORDERING

**SHIPPING**—Give explicit directions as to address and mode of shipment. Orders without instructions will have our best judgment as to forwarding. Place your order early, as our stock of some varieties is limited.

**STOCK**—Periodically inspected by Federal and State Supervisors. A certificate of inspection accompanies each order.

**PRICE**—Extra sized or personally selected plants will be charged for at advanced prices to fit their value. Special price per 100 on many varieties; 30 sold at the 100 rate. Shipping orders for less than \$5.00 not solicited.

**CLAIMS**—All goods are shipped at purchaser's risk after they are delivered to the forwarding company. All other claims must be made to our office within three days of receipt of goods.

**BULBS**—Orders taken in Spring for Fall delivery. Dwarf varieties a specialty.

**NOVELTIES**—In addition to the plants listed in this catalogue, we have on hand limited quantities of other new and unusual rock plants. Send us your list of wants and we will quote prices.

Iris, Peonies, Roses and Evergreens not listed here can be secured for our customers from the leading specialists.

**VISITORS** are welcome. Nursery open week days. Closed on Sunday except by appointment.

## THE GIFT SHOP

Letitia E. Wright, Jr.

A cordial invitation is extended to all to visit the Gift Shop, where articles of interest for the garden as well as for the home may be seen.

**Garden Accessories; Pottery; Vases; Honey in plain and fancy jars; distinctive and unusual Greeting Cards for all occasions; hand woven and hand embroidered Linens; Lamps and Rugs.**

Articles suitable for Weddings, Bridge Prizes, Birthday and Christmas Gifts may be seen.

---

**I**N PRESENTING the following list of ROCK PLANTS and PERENNIALS, we do so in full confidence that those listed will give the maximum of pleasure and enjoyment for the minimum of care and attention.

Our list is overflowing with Nature's choicest floral gems—tiny jewels—from distant Alpine heights, supplemented with little-known beauties of our own U. S. From the four corners of the globe we have received and marshalled in our nurseries a most bewildering array of these tiny floral beauties. From the very outposts of the civilized world, cohorts of these gorgeous little plants have been received and have been carefully acclimated in our nurseries and are now ready to brighten the precincts of your rock garden and borders.

Sturdy Lilliputians they are, full of vigor, carefully grown, and from their prodigal display with us, we know they will prove welcome additions to your more intimate gardens.

**ACHILLEA tomentosa** (Yarrow). A low growing sort with gray-green, ferny foliage and bright yellow flowers in July. 6 in. Ea. 30c; 3 for 75c.

**ACONITUM fisheri** (Monkshood). Handsome spikes of lovely light blue flowers set off by very attractive foliage. Suitable for part shade. 3 to 4 ft. Sept. Ea. 50c; 3 for \$1.30.

**ACTAEA alba** (Baneberry). Attractive spike of white flowers, followed by clusters of white berries in June. Native. For shady places. 1½ ft. Ea. 40c; 3 for \$1.00.

**rubra**. Showy spikes of white flowers followed by clusters of red berries in June. A native for shady spot. 1½ ft. Ea. 40c; 3 for \$1.00.

**AETHIONEMA grandiflora** (Persian Candy-tuft). Lovely gray-green foliage with terminal clusters of soft rosy pink flowers in May. Sunny spot, sandy soil. 10 in. Other varieties in limited quantity. Ea. 50c; 3 for \$1.30.

**AJUGA alba** (Bugle). A rapid creeper, forming a mat of thick green foliage with pretty white flowers in early summer. 8 in. Ea. 30c; 3 for 75c.

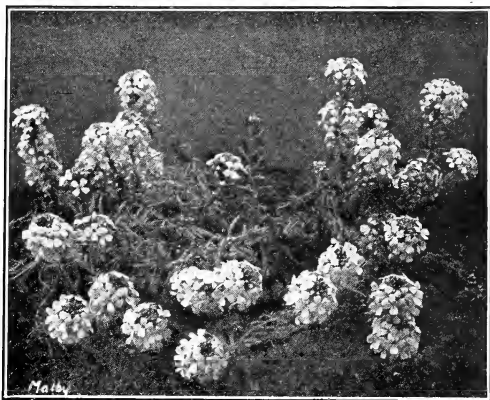
**reptans**. Similar to the above, but with lovely bronze-green foliage and pretty blue flowers. 8 in. Ea. 30c; 3 for 75c.

**ALYSSUM argenteum** (Silver Alyssum). Small gray-green foliage with large flat corymbs of tiny yellow flowers in July. 15 in. Ea. 30c; 3 for 75c.

**saxatile compactum** (Basket of Gold). Fine, rather large gray-green foliage with an abundance of bright yellow flowers in April. 12 in. Ea. 30c; 3 for 75c.

**citrinum**. A very choice type with flowers of a delicate citron-yellow, enhanced by its gray-green foliage. April. 12 in. Ea. 40c; 3 for \$1.00.

**serpyllifolium**. Yellow flowers in June, compact hoary leaves. 4 in. Ea. 40c; 3 for \$1.00.



AETHIONEMA

**ALCHIMILLA** (Lady's Mantle). Robust grower, flowers small yellow in June. 12 in. Ea. 30c; 3 for 75c.

**ANCHUSA myosotidiflora** (Siberian Bugloss). Forget-me-not-like flowers of rich blue on wiry 12-in. stems. Leaves large. May. Ea. 40c; 3 for \$1.00.

**ANDROSACE lanuginosa**. Flowers pale pink, silvery foliage; trailing. Summer blooming. 3 in. Ea. 75c; 3 for \$2.00.

**primuloides** (Rock Jasmine). A high Alpine from the Himalayas, forming compact rosettes of gray-green foliage and in April sending up on wiry stems umbels of very dainty pink flowers. As rare as it is beautiful. 3 in. Ea. 50c; 3 for \$1.30.

\*Sold out for Spring delivery, will be ready by Fall.



A CASCADE OF AUBRIETIA, ALYSSUM AND MOSSY SAXIFRAGES

**ANEMONE hupehensis.** Flowers mauve-pink, early fall. About 20 in. tall. Dainty and attractive. Ea. 30c; 3 for 75c.

**pulsatilla** (Pasque flower). Ferny, silky, gray-green foliage, from which, in early April, spring goblet-shaped flowers of delicate lavender. Handsome seed pods decorate this plant for a month after bloom is over. 10 in. Ea. 40c; 3 for \$1.00.

**ANTHEMIS aizoon** (syn. *Achillea Ageratiifolia*). Tufts of narrow silvery green foliage with small white, double daisy-like flowers in May. 8 in. Very choice. Ea. 50c; 3 for \$1.30.

**AQUILEGIA caerulea** (Rocky Mountain Columbine). Exquisite long-spurred flowers of delicate blue and white, with maiden-hair fern-like foliage. May. 18 in. Ea. 30c; 3 for 75c.

**caradensis.** A native columbine with attractive foliage and an abundance of red and yellow flowers in May. 10 in. Ea. 30c; 3 for 75c.

### AQUILEGIA—Cont'd

**oxypetala.** Blue and white flowers, early and dwarf. 10 in. Ea. 40c; 3 for \$1.00.

**chrysantha.** Another long-spurred beauty with soft yellow flowers in June. A very fine plant. 24 in. June. Ea. 30c; 3 for 75c.

**"pink hybrids."** These are long-spurred hybrids coming in a bewildering variety of soft pastel pink shades. These are very choice. 20 in. May-June. Ea. 40c; 3 for \$1.00.

**"hybrids."** An assortment of superlative long-spurred flowers in a host of glorious shades. May. Ea. 30c; 3 for 75c.

**ARABIS alpina** (Rock cress). Forms cascades of gray foliage with an abundance of pure white flowers in very early spring. Charming with blue bulbs of *Chionodoxa* or *Scilla*. 8 in. Ea. 30c; 3 for 75c.

—**fl. pl.** A double flowered form of the above which is choicer and rarer than the type. April. 8 in. Ea. 40c; 3 for \$1.00.

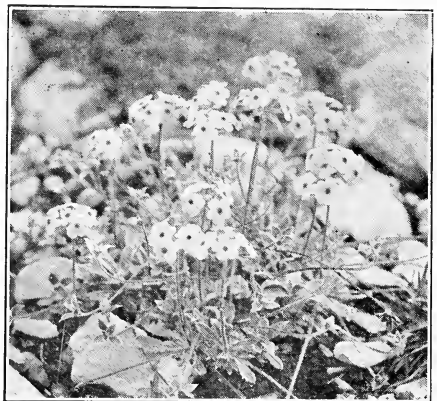
**mollis.** Deep green mats of foliage with dainty white flowers which appear in April. 8 in. Ea. 30c; 3 for 75c.

**ARCTOSTAPHYLOS uva-ursi** (Bearberry). A prostrate evergreen ground cover with rich dark green foliage; white flowers, red berries. Requires acid soil. 5 in. Ea. 75c; 3 for \$2.00.

**ARENARIA montana** (Sandwort). A very pretty low growing creeper with a galaxy of white flowers in June. 6 in. Ea. 30c; 3 for 75c.

**ARISAEMA triphyllum** (Jack-in-the-pulpit). A native for planting in shade in the rock or wild garden. Greenish-white flowers, followed by red berries. 15 in. Ea. 25c; 3 for 60c.

**ARMERIA maritima** (Sea Pink or Thrift). Tufts of grass-like foliage with pink pompons of tiny flowers. 6 in. Ea. 30c; 3 for 75c.



ANDROSACE

\*Sold out for Spring delivery, will be ready by Fall.



ARMERIA

**ARMERIA—Cont'd**

—*alba*. The white counterpart of the above. May. 6 in. Ea. 30c; 3 for 75c.

*lauchiana*. A very choice type with rich carmine colored flowers. Blooms in May and again in early Fall. 6 in. Ea. 30c; 3 for 75c.

**ARTEMISIA frigida** (Fringed Wormwood). Soft, silvery gray, glossy, finely cut foliage. Flowers insignificant. Sunny situation. 6 to 10 in. Ea. 50c; 3 for \$1.30.

**ASCLEPIA tuberosa** (Butterflyweed). Flowers brilliant orange-scarlet in July and August. A showy native plant. 24 in. high. Good for cutting. Ea. 30c; 3 for 75c.

**ASPERULA odorata** (Sweet Woodruff). Snowy white flowers in May. Fragrant green foliage. Ground cover. Does better in shade than in sun. 8 in. Ea. 30c; 3 for 75c.

**ASTER alpinus** (Rock Aster). Pretty soft lavender flowers with yellow centers. Most effective in groups. May. 6 in. Ea. 30c; 3 for 75c.

"**Mauve Cushion.**" Forms cushion-like mounds which in the late Fall are covered with small mauve daisies. 10 in. Ea. 30c; 3 for 75c.

"**Queen Mary.**" Large lavender flowers. October. 2½ ft. New. Ea. 50c; 3 for \$1.30.

**AUBRIETIA hybrida** (False Rockcress). Lovely hybrids in various shades of lavender. Gray foliage. Prostrate creeper. April. 6 in. Ea. 40c; 3 for \$1.00.

**CAMASSIA leichtlini** (Indian Quamash). A native bulbous plant with long spikes of pretty lavender flowers. Shady spot suits this plant. June. 2½-3 ft. 3 bulbs for 45c; per 10, \$1.00.

—*alba*. A counterpart to the above with white flowers. June. 2½-3 ft. 3 bulbs for 45c; per 10, \$1.00.

**CAMPANULA carpatica** (Carpathian bellflower). A charming plant with soft blue flowers held well above the dark green foliage. June. 10 in. Ea. 30c; 3 for 75c.

—"**Riverslea.**" Flowers large, flatish clear blue, a handsome form. July and August. 10 in. Ea. 35c; 3 for 90c.

*garganica* (Gargano Harebell). Delightful pale blue, starfish flowers on close tufts of pointed heart-shaped leaves. A choice variety. 4 in. Ea. 50c; 3 for \$1.30.

*glomerata acaulis* (Low Cluster Bellflower). Large clusters of rich violet flowers, very dwarf. Ea. 35c; 3 for 90c.

*lactiflora* (Milky Bellflower). Pale Blue flowers during July and August. 24 in. Ea. 30c; 3 for 75c.

*portenschlagiana* (Dalmatian Bellflower). A tufty little gem with green foliage, which in June is hidden by myriads of little deep-blue bells. Should be in every rock garden. 4 in. Ea. 50c; 3 for \$1.30.

*rotundifolia* (Harebell). Dainty spikes of deep blue flowers, rather pendent in habit. Ea. 30c; 3 for 75c.

**CERASTIUM tomentosum** (Snow in Summer). A rapid growing creeper with gray foliage and covered with little white flowers in May. 8 in. Ea. 30c; 3 for 75c.

**CERATOSTIGMA plumbaginoides** (Leadwort). A splendid plant with bronzy green foliage and clusters of gentian blue flowers from early Fall till frost. 10 in. Ea. 30c; 3 for 75c.



CAMPANULA GARGANICA

\*Sold out for Spring delivery, will be ready by Fall.

\***CHEIRANTHUS allioni.** Vivid orange flowers in profusion. Treat as a biennial. May. 12 in. Ea. 30c; 3 for 75c.

**linifolius.** A dainty mauve cushion, very free flowering. Ea. 40c; 3 for \$1.00.

**CHRYSANTHEMUM.** We have a fine assortment of hardy large-flowered and pom-pom types, early and mid-season, in various shades of pink, white, bronze and yellow. Ea. 30c; 3 for 75c.

**coccineum** (Pyrethrum). Daisy-like flowers in various shades of red, through pink to white. Good for cutting. 20 in. June. Ea. 30c; 3 for 75c.

**DELPHINIUM "Belladonna"** (Larkspur). Soft sky-blue flowers loosely arranged along strong spikes. A beautiful sort. June and Sept. 2-3 ft. Ea. 30c; 3 for 75c.

**chinensis.** Lovely porcelain blue flowers in great profusion. Fine for massing in borders or corners of rock garden. 18 in. Ea. 30c; 3 for 75c.

"**English hybrids.**" A very fine assortment from the choicest seeds. Various shades of blue. Exquisite subjects for beds or borders. 3-5 ft. June and Sept. Ea. 75c; 3 for \$2.00.

**DIANTHUS arenarius** (Sand Pinks). A profusion of white flowers with fringed petals. Fragrant. June. 8 in. Ea. 40c; 3 for \$1.00.

**barbatus** (Sweet William) "Newport Pink." A very charming shade of watermelon pink. June. 18 in. Ea. 30c; 3 for 75c.

— "**Fairy.**" Delightful pale pink flowers in clusters. June. 18 in. Ea. 30c; 3 for 75c.

**brevicaulis.** A little atom with cushions of soft gray-green foliage, which in June is starred with soft pink blossoms. A little gem. 3 in. Ea. 50c; 3 for \$1.30.

**deltoides** (Maiden pink). A rapid creeper, forming a cataract of bright pink blossoms in June. 6 in. Ea. 30c; 3 for 75c.

— **albus.** Same as above with white flowers. Ea. 30c; 3 for 75c.

**integer.** A pygmy sort forming a close mat of deep green foliage with white or pale pink flowers. Dainty and rare. Ea. 30c; 3 for 75c.

**neglectus,** "The Glacier Pink." Regarded by experts as the very choicest of the race. Petals are carmine pink with buff reverse. Tufty grass-like foliage. A real treasure. 4 in. Ea. 50c; 3 for \$1.30.

**plumarius.** Flowers fragrant in shades of pink; good for cutting, glaucous foliage. Ea. 30c; 3 for 75c.

**pritchardi.** A Lilliputian with minute foliage and bright pink flowers. A fine creeper. 3 in. May. Ea. 75c; 3 for \$2.00.



DODECATHEON MEDIA

**DICENTRA eximia** (Fringed Bleeding Heart). Plumy, lace-like foliage crowned with racemes of pink flowers all summer long. A choice plant. 15 in. Ea. 30c; 3 for 75c.

**spectabilis.** Old-fashioned favorite, graceful sprays of pink heart-shaped flowers. 20 in. Ea. 60c; 3 for \$1.50.

**DIGITALIS** (Foxglove). A biennial. White or various shades of pink on a 30-in. spike. June. Ea. 30c; 3 for 75c.

**DODECATHEON meadia** (Shooting Star). From a basal tuft of foliage the lovely white or pink flowers appear in early summer. 12 in. Ea. 35c; 3 for 90c.

**DORONICUM** (Leopardbane). A very charming plant with numerous large, daisy-like flowers in soft yellow shades. Fine for cutting. Blooms in April. 18 in. Ea. 50c; 3 for \$1.30.

**DRABA repens.** It forms a charming dwarf carpet and produces yellow flowers early in April. 3 in. Ea. 50c; 3 for \$1.30.

**EPIMEDIUM alpinum.** Flowers red and yellow in April. Foliage interesting. Excellent for the shade. 8 in. Ea. 50c; 3 for \$1.30.

**ERINUS alpinus albus.** White flowers; only 4 in. high. Rosettes of dainty foliage. May, June. Ea. 40c; 3 for \$1.00.

**ERODIUM** (Heronbill). Several varieties in limited quantity. Ea. 40c.

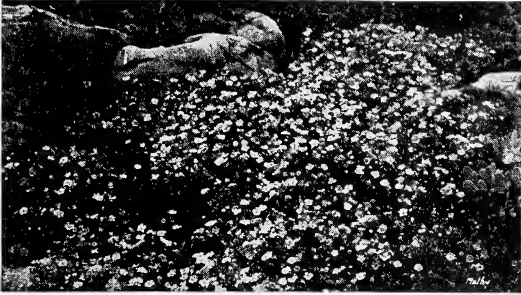
**ERYTHRONIUM** (Dog-tooth violet). A native bulb; good for semi-shade. Other varieties if requested.

**grandiflorum robustum.** Flowers brightest buttercup yellow. Leaves have no mottling. 3 for 50c; 100 for \$6.00.

**revoltum johnsonii.** Rose-pink flowers, perhaps the most lovely of all. 3 for 80c; 100 for \$10.00.

\*Sold out for Spring delivery, will be ready by Fall.





HELIANTHEMUM (Sunrose)

**EUONYMOUS kewensis** (Wintercreeper). A delightful little evergreen creeper forming prostrate mats of fine dark green foliage. Ea. 30c; 3 for 75c.

**EUPATORIUM coelestinum** (Mistflower). A fine border plant with clusters of lavender blue flowers in September when flowers are scarce. Fine for cutting. 2 ft. Ea. 30c; 3 for 75c.

**EUPHORBIA myrsinties** (Spurge). A prostrate plant with masses of soft gray-green foliage and yellow flowers in March. 8 in. Ea. 50c; 3 for \$1.25.

**FERNS.** We offer a very fine and choice assortment of the better kinds for use in the rock or wild garden. Ea. 30c; 3 for 75c.

**FILIPENDULA hexapetala fl. pl.** (syn. *Spiraea filipendula*). A handsome plant with delicate fern-like foliage and clusters of double white flowers. 18 in. Ea. 40c; 3 for \$1.00.

**FESTUCA glauca** (Blue Festuca). Dwarf grass with tufted blue-green foliage. 12 in. Ea. 30c; 3 for 75c.

**GALAX aphylla** (Wand flower). A pretty native plant, for shady places, with evergreen bronzy leaves and scapes of white flowers. 18 in. Ea. 40c; 3 for \$1.00.

**GENISTA sagittalis** (Arrow Broom). Stems prostrate, winged like an arrow, suggestive of a cactus; flowers yellow. May. 6 in. Ea. 50c; 3 for \$1.30.

**GENTIANA andrewsii** (Gentian). The native "closed or bottle gentian." Blue-bird blue flowers in terminal clusters. Sept. 20 in. Ea. 30c; 3 for 75c.

**porphyrio** (Pine-barren Gentian). Beautiful blue flowers in autumn. 18 in. high. Needs an acid soil. Ea. 75c.

\***lagodechiana**. An exquisite prostrate gem with deep sapphire-blue trumpets in September. Rare and choice. 6 in. Ea. \$1.00.

\***farreri**. Drooping shoots, narrow foliage, pale blue trumpet flower. For a very choice spot, only a few. 4 in. Ea. \$2.00.

**GERANIUM argenteum** (Silver Cranesbill). Foliage like shimmering hoar-frost or glistening silver. The pale pink flowers suggest single roses. 6 in. Ea. 50c; 3 for \$1.30.  
**sanguineum alba**. Large, rampant shrubby grower, white flowers in June. 18 in. Ea. 35c; 3 for 90c.

— **lancastriense**. Dwarf and compact form, with pink flowers. Ea. 75c.

**GEUM (Avens)** "Lady Stratheden." Flowers double, rich golden yellow. Summer blooming. 18 in. Ea. 30c; 3 for 75c.

"Mrs. Bradshaw." Double flowers of fiery red. Summer blooming. 18 in. Ea. 30c; 3 for 75c.

**GLOBULARIA Nana**. Tiny leaves, close growing ground cover. Flower-heads like blue balls in June. Ea. 50c; 3 for \$1.30.

**GYPSOPHILA cerastoides** (Mouse-eared Chalkplant). A dainty little plant with white, red-veined flowers. Low growing and choice. June. 8 in. Ea. 40c; 3 for \$1.00.

**repens**. Fine trailing gray-green foliage studded with a cloud of little white flowers in June. 8 in. Ea. 30c; 3 for 75c.

**HEDERA helix** (Ivy). Climbing evergreen vine. Young plants, 3 in. pot. Ea. 25c; 3 for 75c. Larger plants 50c each and upward.

**HELENIUM** "Riverton Gem." Flowers yellow, changing to wallflower red. A good cut flower. September. 5 ft. Ea. 30c; 3 for 75c.

**HELIANTHEMUM** (Sun Rose). Excellent plants for the full sun in poor soil, foliage semi-evergreen. We can supply the following separate colors: Clear yellow, orange, and a beautiful shrimp pink. Ea. 35c; 3 for 85c.

**HERNIARIA glabra**. Dwarf ground cover, excellent between stepping stones. ½ in. Ea. 35c; 3 for 90c.

**HEUCHERA** (Coral Bells). Neat, compact semi-evergreen foliage from which in June issue spikes of pretty bells. Fine for cutting.

**pale pink**. 24 in. Ea. 35c; 3 for 85c.

**glowing red**. 15 in. Ea. 50c; 3 for \$1.25.

**HOSTA undulata variegata** (Plaintain Lily) (syn. *Funkia*). Pale lavender flowers in August. The foliage is very handsomely variegated green and white. 12 in. Ea. 30c; 3 for 75c.

**HYPERICUM buckleyi** (St. John's Wort). A native plant of fine habits with pretty yellow flowers over a long period in summer. 8 in. Ea. 75c; 3 for \$2.00.

\***coris**. The gem of this race with tiny green, heather-like foliage and soft yellow flowers. The flowers contrast prettily against the blue-green foliage. A real gem. July. 6 in. Ea. 75c.

**repens**. Bright yellow flowers, a choice dwarf carpeter. 4 in. Ea. 60c; 3 for \$1.60.

\*Sold out for Spring delivery, will be ready by Fall.



IRIS CRISTATA

**IBERIS sempervirens** "Snow Flake" (Perennial Candytuft). Dark evergreen foliage, which sets off the brilliant snow-white flowers. May. 10 in. Ea. 30c; 3 for 75c.

— "Little Gem." Aptly named, as it is a little beauty of very compact growth. Evergreen foliage and white flowers. 6 in. Ea. 30c; 3 for 75c.

**IRIS arenaria.** Keen rock gardeners will certainly want this rare little gem. Only 4 inches high, it offers us the most delightful flowers of soft Nanken yellow with brown beard. In addition to this, it is delightfully fragrant. Very rare and our stock is limited. May. Ea. \$2.00; 3 for \$5.00.

**cristata.** The native crested iris. Lavender blossoms with yellow crest. Charming and dainty. 4 in. May. Ea. 30c; 3 for 75c.

**dichotoma.** "The Vesper Iris" of Japan. Small lavender flowers on branching stems. The flowers open in the afternoon. August. 3 ft. Ea. 75c; 3 for \$2.00.

**gracilipes** (Slender Iris). Flowers like pale blue, wide-winged butterflies of sheerest, crumpled silk. Requires part shade, with no lime. 12 in. Ea. \$1.00. July delivery only.

**pumila hybrida.** A lovely little iris with deep purple flowers that appear in May. 10 in. Ea. 30c; 3 for 75c.

— **azurea** (syn. *coerulea*). Dwarfier than the above—6 in.—but with lovely sky-blue flowers in May. A fine variety. Ea. 50c; 3 for \$1.30.

**setosa canadensis** (Arctic Iris). Native of northern sandy beaches, blue flowers. May. 10 in. Ea. \$1.00.

**verna.** A native evergreen species requiring acid soil, with lavender flowers which appear in May. 4 in. Ea. 30c; 3 for 75c.

In addition to the above we can supply other varieties from the leading specialists.

**LAMIUM maculatum** (Spotted Deadnettle). Rapid grower, variegated leaves, flowers pink. May. 12 in. Ea. 30c; 3 for 75c.

**LEONTOPODIUM alpinum** (The Alpine Edelweiss). Flannel-like white flower-heads, gray foliage. Ea. 50c; 3 for \$1.30.

**LEWISIA rediviva.** Pink flowers, narrow leathery leaves in a rosette. 4 in. Ea. 50c; 3 for \$1.30.

Other varieties in limited quantities.

**LINARIA aequitriloba.** Pretty lavender flowers in profusion. A flat ground cover of dainty foliage. Part shade. Walls or paths. ½ in. Ea. 50c; 3 for \$1.30.

**LINUM flavum** (Flax). Delightful green foliage with striking clear yellow blooms in June and July. Splendid plant. 20 in. Ea. 30c; 3 for 75c.

**perenne.** Another pretty kind with feathery blue-green foliage and sapphire-blue flowers which appear in June. 20 in. Ea. 30c; 3 for 75c.

**LOBELIA cardinalis** (Cardinal flower). Beautiful spike of red flowers, native along streams; does well in garden. July. 24 in. Ea. 30c; 3 for 75c.

**MAZUS pumilio.** One of the neatest and most rapid creepers, with tiny snapdragon-like flowers of mauve with yellow lip. Excellent for part shade. June. 1 in. Ea. 30c; 3 for 75c.

**MENTHA requieni** (Requien Mint). Delightful low creeper, very fragrant, minute flowers. 2 in. Ea. 50c; 3 for \$1.30.

**MERTENSIA Virginica** (Bluebells). A native, with blue-green foliage and blue flowers with pink buds in April. Foliage disappears in June, reappearing early the following Spring. 18 in. Ea. 30c; 3 for 75c.

**MITCHELLA repens** (Partridgeberry). A native of our woodlands, with deep evergreen foliage. Acid soil. The flowers are white and are succeeded by bright red berries. 2 in. Ea. 30c; 3 for 75c.

**MUEHLENBECKIA nana** (Wire Bush). A shrub-like creeper with minute leaves of a deep bronzy-green. A fine ground cover for rock garden bulbs. 4 in. Ea. 40c; 3 for \$1.00.

**MYOSOTIS scorpioides** (True Forget-me-not). Lovely light blue flowers, yellow centers. Best in a moist position. Ea. 30c; 3 for 75c.

**NEPETA mussini** (Catmint). Hoary gray foliage, against which the soft lavender flowers look very effective. May. 18 in. Ea. 30c; 3 for 75c.

**OENOTHERA caespitosa** (Evening Primrose). White flowers fading to pink as they age. Low basal tuft of leaves. Summer. 6 in. Ea. 50c; 3 for \$1.30.

**fruticosa youngi.** Bright yellow flowers in summer. 18 in. Ea. 30c; 3 for 75c.

**missouriensis.** Large yellow flowers which appear in July and August. Fine for wall or border planting. 8 in. Ea. 30c; 3 for 75c.

\*Sold out for Spring delivery, will be ready by Fall.

- PACHYSANDRA terminalis** (Japanese Spurge). A most useful evergreen ground cover for planting under trees where little else will grow. 8 in. Ea. 30c; 3 for 75c.
- PAEONIA** (Peony). Hardy, long-lived old-fashioned plant. Showy, large flowers. Pink, white or red.
- New Named Herbaceous Varieties.** (Prices on request.)
- P. officinalis rubra fl. pl.** Early old-fashioned double red. Ea. \$1.00.
- "Single Japanese Tree Peonies" from a noted grower. Pink, white or red by color. Price \$5.00 up—according to size, shape and number of the same variety available.
- PAPAVER nudicaule** (Iceland Poppy). Cup-shaped flowers, white, yellow or orange-scarlet. 12 in. Ea. 30c; 3 for 75c.
- PENTSTEMON coeruleus.** A delightful plant with soft blue flowers in May. 12 in. Ea. 35c; 3 for 90c.
- PHLOX amoena.** A native phlox with rich deep green leaves and brilliant pink flowers in early May. 6 in. Ea. 30c; 3 for 75c.
- bifida.** Pale violet, deeply cleft flowers, native west of the Allegheny Mountains. Rare in cultivation. Ea. 50c; 3 for \$1.30.
- divaricata**, var. "Laphamii." A native of our woodlands. Evergreen leaves and periwinkle blue flowers in May. Fragrant and desirable. 10 in. Ea. 40c; 3 for \$1.00.
- ovata.** Deep pink flowers. 15 in. Ea. 30c; 3 for 75c.
- suffruticosa** "Miss Lingard." White with faint lavender eye. Fragrant, blooming in June. 2 ft. Ea. 30c; 3 for 75c.
- subulata.** Indispensable evergreen creepers, with moss-like foliage, hidden by flowers during blooming season.
- alba.** White flowers in profusion. May. 4 in. Ea. 30c; 3 for 75c.
- "Apple Blossom."** Beautiful pale pink flowers. New. May. Ea. 50c; 3 for \$1.30.
- "G. F. Wilson."** Fine lavender flowers. Most desirable. May. 6 in. Ea. 30c; 3 for 75c.
- rosea.** The popular "Mountain Pink" or "Moss Pink." A profusion of bright pink flowers in early spring. 5 in. Ea. 30c; 3 for 75c.
- "Vivid."** The brightest, purest pink of the subulata. Brilliant flowers hide the tufty moss-like foliage. Very dwarf. 3 in. Ea. 35c; 3 for 90c.
- PINKS.** See *Dianthus* on page ?.
- PLUMBAGO.** See *Ceratostigma plumbaginoides* on page ?.
- POLEMONIUM repens** (Jacob's Ladder). A lovely plant with lacy foliage and bright light blue flowers in early May. Succeeds best in part shade. 10 in. Ea. 30c; 3 for 75c.
- POTENTILLA tonguei.** Flowers deep yellow, red center, of trailing habit. Rare. Ea. 60c.
- tridentata** (Wineleaf Cinquefoil). White strawberry-like blossoms; foliage deep glossy green, which turns scarlet in the Fall. Requires an acid soil. 8 in. Ea. 40c; 3 for \$1.00.
- verna nana.** Here we offer the gem of the race. The plant forms close mat of pretty foliage, above which appear the brilliant yellow flowers in April. Rare and beautiful. 3 in. Ea. 50c; 3 for \$1.30.
- PRIMULA denticulata.** Large globular heads in various shades of lilac. Enjoys a cool or moist situation. Ea. 40c; 3 for \$1.00.
- polyantha.** Various colors; a good English strain. Ea. 30c; 3 for 75c.
- PRUNELLA grandiflora rubra** (Selfheal). Rapid grower, thick mat; suitable for less choice situations. Pink. July. 8 in. Ea. 30c; 3 for 75c.
- PULMONARIA azurea** (Lungwort). Gentian blue flowers, large dark green hairy leaves. April. 8 in. Ea. 50c; 3 for \$1.30.
- saccharata.** Pretty foliage with white motlings. Flowers pink to blue. A charming plant. 12 in. Ea. 50c; 3 for \$1.30.
- PYRETHRUM.** See *Chrysanthemum*.
- PYXIDANTHERA barbulata** (Pyxie Moss). Moss-like in growth. ½ in. high. Covered with small pinkish-white flowers in earliest spring. Very acid soil required. Ea. 75c.
- SANTOLINA cham. incana** (Lavender cotton). Inconspicuous yellow flowers, but a foliage plant of first grade. Gray-green aromatic foliage. 15 in. Ea. 30c; 3 for 75c.
- SAPONARIA ocymoides splendens** (Rock Soapwort). A trailing plant with dark green foliage and clustered pink flowers in May. 6 in. Ea. 30c; 3 for 75c.
- SAXIFRAGA macnabiana** (Rockfoil). Gray-green rosettes outlined with silvery encrustations. White flowers, speckled in panicles in May. 10 in. Ea. 50c; 3 for \$1.30.
- muscoides.** A tufty little mossy-leaved plant with a profusion of white flowers in May. A dainty gem. 6 in. Ea. 50c; 3 for \$1.30.
- megasea.** Large leathery, dark green leaves with a spike of soft pink blooms in very early Spring. 10 in. Ea. 40c; 3 for \$1.00.
- SEDUM acre** (Stonecrop). Low growing mats of mossy foliage with a multitude of little yellow star-shaped flowers in May. Easy to grow. 3 in. Ea. 30c; 3 for 75c.
- album.** A rapid grower, forming mats of succulent dark green foliage with white flowers in June. 5 in. Ea. 30c; 3 for 75c.
- dasyphyllum.** A gem with little silvery gray bead-like leaves and pink flowers. Choice. 3 in. Ea. 50c; 3 for \$1.30.

\*Sold out for Spring delivery, will be ready by Fall.



SEMPERVIVUM

## SEDUM—Cont'd

**ewersi.** Blue-gray foliage and deep pink flowers. 10 in. July. Ea. 30c; 3 for 75c.

**kamtschaticum.** Leaves dark green with orange-yellow flowers in July. 8 in. Ea. 30c; 3 for 75c.

**lydium.** Another very good kind with bright green foliage, which turns red in Winter. Makes a close mat. White flowers. 3 in. Ea. 30c; 3 for 75c.

— **glaucum.** Foliage glaucous-green, choice. Ea. 30c; 3 for 75c.

**nevii.** Rare native, close rosettes of gray foliage and white flowers. May. 5 in. Ea. 50c; 3 for \$1.30.

**pulchellum.** Leaves like small fir trees, pink flowers grouped like a starfish. May. 6 in. Ea. 40c; 3 for \$1.00.

**reflexum.** Grayish-green foliage that looks like a club moss. Yellow flowers in July. Rapid grower. 6 in. Ea. 30c; 3 for 75c.

**rupestris minor.** A very attractive kind with blue-green foliage, which assumes reddish tints in the Fall. Yellow flowers in July. 8 in. Ea. 30c; 3 for 75c.

**sarmentosa.** Low growing rapid creeper with yellow flowers in late Summer. Fine for covering waste spots. 4 in. Ea. 30c; 3 for 75c.

**sexangulare.** Flowers yellow; a mat of dark green foliage. 4 to 6 in. Ea. 30c; 3 for 75c.

**sieboldi.** Considered by many as the finest sedum in cultivation. A very pretty plant with round glaucous foliage with reddish margin. Its flowers, which appear in Sept., are deep pink. 6 in. Ea. 40c; 3 for \$1.00.

**spectabile.** A tall growing kind with showy pink flowers in Sept. The foliage is gray-green and most attractive at all seasons. 12 in. Ea. 30c; 3 for 75c.

## SEDUM—Cont'd

**spurium.** A rapid creeper, the leaves of which turn red in Winter. Pink blossoms in late Summer. 6 in. Ea. 30c; 3 for 75c.

**ternatum.** A native shade-loving sedum with fleshy leaves and white flowers which appear in May. Attractive and desirable. 3 in. Ea. 30c; 3 for 75c.

**SEMPERVIUM.** These are decorative, unusual and attractive, rosettes of fleshy leaves, large or small; some are cobwebbed, as illustrated. Flowers pink or yellow. Ea. 30c; 3 for 75c.

**SHORTIA galacifolia** (Oconee Bells). One of the very finest of our native plants, now becoming rare. The evergreen leaves assume lovely Autumn tints. The exquisitely fringed white flowers appear in April. Requires an acid soil and shade. 4 in. Ea. 50c; 3 for \$1.30.

**SILENE alpestris** (Catchfly). Glossy deep green foliage with dainty white flowers with notched petals. June. 6 in. Ea. 30c; 3 for 75c.

\***hookeri.** Beautiful pink fringed blossoms, for a choice spot. Ea. 50c; 3 for \$1.30.

**pennsylvanica** (Peat Pink). Recommended by Mrs. Wilder. A beautiful native with neat leaves which turn bronze in Fall. The flowers, in clusters, are a lovely pink. May. 8 in. Ea. 40c; 3 for \$1.00.

**schafta.** Masses of bright pink in early Fall. 6 in. Ea. 30c; 3 for 75c.

**virginica** (Firepink). Large vivid scarlet flowers in May and June. 6 in. Ea. 35c; 3 for 90c.

\***wherryi.** Deep pink flowers in May. New. Ea. 50c; 3 for \$1.30.

**SISYRINCHIUM** (Blue-Eyed Grass). Grass-like foliage; small blue flowers, native. May. 6 in. Ea. 30; 3 for 75c.



THYMUS SERPYLLUM ALBUM

\*Sold out for Spring delivery, will be ready by Fall.

**THALICTRUM adiantifolium** (Meadowrue).

A foliage plant with maidenhair fern-like foliage. Pretty for association with border plants. Good in part shade or sun. 18 in. Ea. 30c; 3 for 75c.

**angustifolium.** Fluffy masses of sulphur-yellow flowers in June. 5 ft. Ea. 50c; 3 for \$1.30.

**THYMUS citriodorus** (Thyme). Deep green, lemon scented foliage with lavender flowers. Shrub-like. 10 in. Ea. 30c; 3 for 75c.

**serpyllum album.** Forms a creeping mat of fine foliage with a profusion of white flowers in July. One of the daintiest of plants. 1 in. Ea. 30c; 3 for 75c.

—**coccineum.** Similar to the above, but the blossoms are of a bright pink, foliage bronzes in Winter. July. 1 in. Ea. 30c; 3 for 75c.

—**lanuginosus.** A treasure with gray-green, woolly foliage. Forms lovely mats which contrasts with other plants. 1 in. Ea. 30c; 3 for 75c.

**TIARELLA cordifolia** (Foam Flower). A native with heart-shaped leaves and a spire of misty white flowers. Shade. 8 in. Ea. 30c; 3 for 75c.

**TRILLIUM grandiflorum** (Wake Robin). A beautiful native bulb for a shady spot. Exquisite white flowers in May. Attractive foliage. 12 in. 3 for 45c; 100 for \$8.00.

**TROLLIUS** (Globe Flower). Beautiful globe-shaped blossoms of lovely shades of yellow or orange. We offer mixed varieties only. June. Ea. 50c; 3 for \$1.30.

**TUNICA saxifraga** (Coat Flower). Delicate foliage which in July is completely hidden by the masses of pale pink blossoms. Very dainty. 8 in. Ea. 30c; 3 for 75c.

**VERONICA incana** (Speedwell). From a tuft of silvery-gray foliage there appear in June spikes of pretty lavender flowers. 10 in. Ea. 30c; 3 for 75c.

**pectinata.** A prostrate gray-green creeper with a profusion of pretty blue and white flowers in June. 5 in. Ea. 30c; 3 for 75c.

**prostrata.** Fine mat of green foliage, at the ends of which in May appear the periwinkle blue flowers in abundance. 6 in. Ea. 30c; 3 for 75c.

**repens.** A wee little mite that makes a fine mat of pretty foliage which is starred in May with pale blue blossoms. 1 in. Ea. 30c; 3 for 75c.

**rupestris.** A creeping variety with fine foliage and spikes of deep blue flowers in May. 5 in. Ea. 30c; 3 for 75c.

—**albus.** Similar to the above, but with white flowers and blooming in May. 5 in. Ea. 30c; 3 for 75c.



VERONICA PROSTRATA

**VERONICA**—Cont'd

—**"Heavenly Blue."** Dwarfier, deep blue flowers in early May, fine for between stepping stones. 3 in. Ea. 50c.

—**rosea.** Creeping mat, with mauve pink flowers in May. Ea. 40c; 3 for \$1.00.

**saxatile.** Dark, small, thick leaves; bright blue flowers. 4 in. Ea. 50c; 3 for \$1.30.

**spicata erica.** A variety with heather-like blooms and upright in growth. Lovely pink flowers in June. Fine for cutting. 18 in. Ea. 30c; 3 for 75c.

**spuria.** Spikes of amethyst blue flowers. Fine for cutting or for the border. 18 in. Ea. 30c; 3 for 75c (June).

**"True Blue."** Brilliant, rich blue flowers. June, July. 12 in. Ea. 35c; 3 for 90c.

**VINCA minor** (Periwinkle). A rapid growing evergreen ground cover with very pretty blue flowers in May. 4 in. Ea. 30c; 3 for 75c.

**VIOLA cornuta alba.** Dainty, surprised faces of pure white. A good bloomer. Ea. 30c; 3 for 75c.

**lutea splendens.** Rich golden yellow. Ea. 30c; 3 for 75c.

**"Jersey Gem."** One of the best in cultivation. Rich, raisin-purple flowers during the whole season. Very choice. 8 in. Ea. 35c; 3 for 85c.

**pedata** (Birds-foot violet). A lovely native violet which should be grown only in acid soil. The flowers are soft lavender and purple. May. 4 in. Ea. 25c; 3 for 60c.

—**linearifolia.** An exceptionally choice violet for acid soil with soft lavender flowers in May. 3 in. Ea. 25c; 3 for 60c.

**tricolor** ("Johnny-jump-up"). These bright faced, cheery "Johnnies" should be in every garden in the land. Always in bloom. Purple and yellow. 8 in. Ea. 15c; 3 for 40c.

\*Sold out for Spring delivery, will be ready by Fall.



## Dwarf Trees and Shrubs

(Evergreen and deciduous)



For accentuating the high lights in the rock garden and for breaking up the monotony of low planting in the home grounds. They add brilliant color in the Spring garden and delightful cheer during the long, dreary Winter days when evergreens show up to such advantage.

We have a delightful assortment of these beautiful shrubs in various pastel shades and in various sizes.

Customer's selection will be charged at value of stock selected.

**AZALEA.** When in bloom the whole bush is a mass of color varying in tones of pink, yellow and orange, according to variety. Some are evergreen, others deciduous.

**calendulacea** (Flame Azalea). Orange-yellow to flame-red. Size 18 to 24 in. Ea. \$3.50.

**"Ghent Hybrids."** Various shades. 15 to 18 in. Ea. \$4.00 and upwards.

**hinodegiri.** Bright cherry-red flowers. Size 8 to 10 in. Ea. \$2.00.

**hinomayo.** Flowers soft clear pink. Size 10 to 12 in. Ea. \$2.50.

**indica alba.** Pure white flowers. Size 12 to 15 in. Ea. \$2.50.

**kurume.** "Pink Pearl." 8 to 10 in. Ea. \$2.25.

**mollis.** Large flowers in various shades of orange, yellow and red. Size 15 to 18 in. Ea. \$4.00.

**BUXUS suffruticosa** (Dwarf Boxwood). A compact evergreen shrub. Useful for edging formal beds. Larger plants in limited quantity. Size 3 to 4 in., per 100, \$20.00; 4 to 6 in., per 100, \$25.00.

**CALLUNA vulgaris** (Scotch Heather). An airy, graceful evergreen shrublet with delightful lavender flowers in August. The famed Scotch Heather. Fine for the rock garden. Ea. 85c.

**vulgaris alba.** The white flowering form of the above which is delightful for association with the lavender form. Ea. 85c.

**CHAMAECYPARIS pisifera plumosa aurea.** Rich yellow-tipped foliage. Good for contrasts. Size 18 to 24 in. Ea. \$3.50.

**COTONEASTER adpressa** (Rockspray). Excellent low growing shrub with spreading branches which are crowded with glossy leaves. Red berries in Autumn. Choice. Fine specimen, well-grown plants. Ea. \$2.00.

**dammeri radicans.** A prostrate creeper with delightful foliage and red berries that last well into the Winter months. Choice. Ea. \$2.00.

**horizontalis.** Horizontally spreading branches well filled with fine glossy foliage. Red berries in Winter. Ea. \$1.50.

**DAPHNE cneorum** (Garland Flower). A charming evergreen shrub with whirls of fine foliage and terminal clusters of the most fragrant pink flowers in Spring and again in the late Fall. Ea. \$2.00.

**ERICA carnea** (Heather). A fascinating little evergreen shrub with pink flowers in April set off by its delightful foliage. Ea. \$1.00.

**FORSYTHIA spectabilis** (Golden Bell). A superb early blooming shrub whose bell-shaped yellow flowers are arranged along the branches in large quantities and before the leaves appear. Specimens. Ea. \$2.00.



AZALEAS IN ROCK GARDEN

DWARF TREES AND SHRUBS—Cont'd

**ILEX glaber** (Inkberry). A hardy native evergreen shrub with dark oval foliage. Size 15 in. Ea. \$2.50.

**opaca** (American Holly). Glossy evergreen foliage. 2½ to 3 ft. Ea. \$4.50.

**JUNIPERUS chinensis pfitzeriana**. Broad pyramidal evergreen, spreading branches; grayish-green foliage. Size 1 to 2 ft., \$3.00; 2 to 3 ft., \$5.00.

**sargentii**. A really splendid evergreen with prostrate branches. A trailing species which adds dignity to the home grounds planting or the rock garden. Fine specimens. 8 to 12 in. Ea. \$3.50.

**horizontalis**. Another beautiful trailing evergreen which, as an individual specimen or in group planting, is always delightful. 12 to 15 in. Ea. \$3.00.

**KALMIA latifolia** (Mountain Laurel). Broad-leaved evergreen, clusters of pale pink flowers. Other sizes available. Size 15 to 18 in. Clump \$2.00.

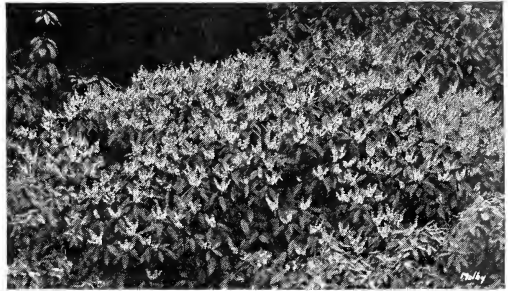
**LEIOPHYLLUM buxifolium** (Sand Myrtle). Evergreen shrub, small shiny leaves. Flowers white in clusters at end of stems. Needs acid soil. 6 to 8 in. Ea. \$1.00.

**LEUCOTHOE catesbaei**. An evergreen with drooping sprays of white flowers and glossy leaves which turn bronze in Winter. Size 18 in. Ea. \$1.25.

**LONICERA nitida** (Bush Honeysuckle). A graceful shrub with small shining leaves, turning rich purple tints in Autumn. Very choice. Specimens 2½ ft. Ea. \$2.25.

**pileata**. A fine dwarf shrub of spreading habit and yellow flowers, followed by purple berries in the Fall. Box-like leaves. Ea. \$1.00.

**PACHISTIMA canbyi**. A good evergreen low growing shrub that makes a fine ground cover. Ea. 75c; 3 for \$2.00.



PIERIS FLORIBUNDA

**PHOTINIA villosa**. A tall growing shrub with scarlet berries, splendid foliage. Specimens 4 to 6 ft. Ea. \$6.00.

**PICEA canadensis albertiana** (Dwarf Alberta Spruce). A symmetrical evergreen that stays in scale for many years. Very slow growing. Dense, fine foliage. Size 6 to 8 in. Ea. \$2.75.

**PIERIS floribunda**. A low growing, distinctive evergreen shrub with festoons of white flowers in April. Size 12 in. Ea. \$2.50.

**PINUS montana mughus**. Low, dense evergreen growth. Very hardy. 12 to 15 in. Ea. \$3.00.

**RHODODENDRON carolinianum**. A superb evergreen shrub, compact, bushy growth, with beautiful pink flowers in early Spring. Size 15 to 18 in. Ea. \$4.00.

**SALIX repens argentea** (Silver Creeping Willow). Gray-green foliage, a spreading shrub of varying heights. Ea. \$1.00.

**SPIREA "Van Houttei"**. A splendid shrub with graceful sprays of white flowers in Spring. Specimens 4 to 5 ft. Ea. \$1.50.

**TAXUS canadensis** (Canada Yew). Wide-spreading evergreen for part shade. Deep crimson berries. 12 to 18 in. Ea. \$3.50.

**cuspidata** (Japanese Yew). Desirable hardy foliage almost black. 15 to 18 in. Ea. \$4.00.

— **densa**. 8 to 12 in. Ea. \$4.00.

— **nana**. 18 to 21 in. Ea. \$8.00.

**VACCINIUM vitis-idaea minor**. Pink flowers, bright red berries, good evergreen foliage about the size of boxwood. Requires an acid soil. Ea. \$1.00; 3 for \$2.50.

**VIBURNUM carlesii**. Clustered pale pink flowers suggesting trailing arbutus, deliciously fragrant. Size 12 to 18 in. Ea. \$1.75.



JUNIPERUS

GARDEN SUNDRIES

ADCO

Artificial Stable Manure. Make it of grass clippings, weeds, etc., in your own garden. Directions sent with each shipment.

25 lb. bags, each ..... \$2.00  
 (Enough for 12 wheelbarrow loads of garden waste, making 1/2 ton of manure.)

150 lb. bags, each ..... \$10.50  
 (Enough for a heap 10 ft. x 10 ft. x 6 ft., making about three tons of manure.)

ALUMIUM SULPHATE

For producing an acid soil—use 1 lb. to a square yard; repeat if necessary.

10 lbs. .... \$ .75  
 50 lbs. .... 3.00  
 100 lbs. .... 5.00

EARTHENWARE FLOWER POTS

Height and Width Inside	Each	Doz.	100	1000
2 inch	\$.03	\$.25	\$1.15	\$10.15
3 "	.06	.40	1.95	17.55
4 "	.07	.50	4.00	27.00
5 "	.10	.75	5.40	48.60
6 "	.12	1.25	8.10	72.90
7 "	.20	2.00	13.50	.....
8 "	.25	2.75	19.50	.....
9 "	.35	4.00	30.00	.....
10 "	.50	5.50	40.50	.....
12 "	1.00	11.00	82.50	.....
14 "	1.50	17.50	135.00	.....

Other sizes and varieties if desired.

TABLES, Painted Pot

	100	1000
4 inch	\$0.35	\$2.25
4 1/2 inch	.40	2.75
5 inch	.45	3.00
6 inch	.55	3.50
8 inch	1.60	9.00
10 inch	1.75	11.00
12 inch	2.25	14.00

LABELS, TREE

If wanted by parcel post, add 10c. per 100, 25c. per 1000 for postage.

Copper Wire. Painted.....\$0.50 ..... \$3.25

PEAT MOSS

Granulated (imported) soil improver. Makes light soil retentive of moisture; makes heavy soil light. Excellent for Azaleas, Rhododendrons and Evergreens. Pk. for 50c.; per bale (of about 200 lbs.) \$4.50.

SOIL TESTKIT, "La Motte"

All equipment necessary for soil tests and directions, as to how to change soil reaction, contained in a mailing tube. This can be readily carried in the pocket. \$2.00 each.



VIGORO

A specially prepared plant food for trees, lawns, vegetables, flowers and greenhouse plants. Directions on each package. 5 lbs. for 75c., \$1.75 per 25 lbs., \$3.00 per 50 lbs., \$5.00 per 100 lbs.

WATER CAN

(Wotherspoon's). Extra heavy, oval—long spout. Each can equipped with a fine and a coarse rose.

6 quart ..... \$5.50  
 10 quart ..... 6.50





<b>A LITTLE BOOK OF CLIMBING PLANTS</b> , by Prof. Alfred C. Hottes.....	\$1.75
<b>AMERICAN ROCK GARDENS</b> , by Stephen F. Hamblin.....	1.25
<b>BIRDS OF THE WILD—How to Make Your Home Their Home</b> , by Frank C. Pellett..	1.75
<b>BULBS THAT BLOOM IN THE SPRING</b> , by T. A. Weston.....	2.00
<b>CONTINUOUS BLOOM FOR GARDENS IN AMERICA: What, Where, When to Plant</b> , by Louise Shelton.....	3.50
<b>CULINARY HERBS</b> , by M. G. Kains.....	1.10
<b>EVERGREENS FOR THE SMALL PLACE</b> , by F. F. Rockwell.....	1.00
<b>FERTILIZERS</b> , by E. B. Voorhees, revised by S. B. Haskell.....	2.50
<b>GARDEN CINDERELLAS (Lilies)</b> , by Helen M. Fox.....	5.00
<b>HOW TO GROW ROSES</b> , by Robert Pyle, J. Horace McFarland and G. A. Stevens. A new edition, completely revised and brought down to date. Illustrated with numerous color and halftone plates.....	2.00
<b>HARDY EVERGREENS</b> , by F. A. Schrepfer.....	1.25
<b>HARDY BULBS FOR AMATEURS</b> , by Reverend Joseph Jacob.....	1.75
<b>LILAC CULTURE</b> , by John C. Wister.....	1.25
<b>MANUAL OF CULTIVATED TREES AND SHRUBS</b> , by Alfred Rehder.....	10.50
<b>OUR GARDEN FLOWERS</b> , by Harriet L. Kæeler.....	3.00
<b>OUR WILD ORCHIDS</b> , by Frank Morris and Edward A. Eames.....	7.50
<b>PLANTS' NAMES</b> , by T. S. Lindsay.....	1.00
<b>ROCK GARDEN PRIMER</b> , by Archie Thornton.....	2.00
<b>ROCK GARDEN AND ALPINE PLANTS</b> , by Henri Correvon. Edited by Leonard Barron. Written for American conditions. The illustrations include eight color plates and numerous halftones. To be issued in May. (Price on application.)	
<b>RHODODENDRONS FOR AMATEURS</b> , by E. H. M. Cox.....	1.75
<b>ROOF GARDENING</b> , by Ida Mellen.....	1.25
<b>SPRING FLOWERING BULBS</b> , by C. L. Thayer.....	1.25
<b>STARTING EARLY VEGETABLES AND FLOWER PLANTS UNDER GLASS</b> , by C. H. Nissley.....	3.00
<b>THE BOOK OF ANNUALS</b> , by Prof. Alfred C. Hottes.....	1.50
<b>THE BOOK OF BULBS</b> , by F. F. Rockwell.....	3.00
<b>THE BOOK OF PERENNIALS</b> , by Prof. Alfred C. Hottes.....	1.50
<b>THE BOOK OF SHRUBS</b> , by Prof. Alfred C. Hottes.....	3.00
<b>THE BOOK OF WATER GARDENING</b> , by Peter Bissat.....	5.00
<b>THE CHRYSANTHEMUM AND ITS CULTURE</b> , by E. A. White.....	2.00
<b>THE CULTIVATED EVERGREENS</b> , by L. H. Bailey.....	3.00
<b>THE IRIS</b> , by John C. Wister.....	1.25
<b>THE GLADIOLUS</b> , by A. C. Beal.....	1.25
<b>THE ROCK GARDEN</b> , by E. H. Jenkins.....	3.00
<b>THE SEASONS IN A FLOWER GARDEN</b> , by Louise Shelton.....	2.00
<b>THE STANDARD CYCLOPEDIA OF HORTICULTURE</b> , edited by L. H. Bailey.....	25.00
<b>WATER GARDENS AND GOLDFISH</b> , by Robert V. Sawyer and Edwin H. Perkins.....	1.50

Hartland Adv. Service, Horticultural Writers and Printers, 154 Nassau Street, New York.

NOTES

*The Logan Nurseries*

MARY F. WRIGHT, Proprietor

Ambler - - - Pennsylvania